

NOTES:

MINIMUM 6" LEG OF CONCRETE, MEASURED AT INSIDE FACE OF MANHOLE, SHALL BE PROVIDED BETWEEN ALL OPENINGS AND JOINTS. DEVIATIONS MUST BE APPROVED BY MSDGC.

*MANHOLE FRAMES SHALL BE SECURELY FASTENED BY (4) 7/8" STAINLESS STEEL ANCHOR BOLTS. DOWEL HOLES SHALL BE IN ACCORDANCE WITH ITEM 510 OF THE SPECIFICATIONS. FRAME AND COVER SHALL BE ACC. NO. 49005.

ALL REINFORCING STEEL SHALL HAVE A MINIMUM COVER OF 1 1/2" BOTH FACES.

JOINTS ON MANHOLE SECTIONS SHALL BE MADE WITH A RUBBER GASKET MEETING THE REQUIREMENTS OF ASTM C-443, EXCEPT THAT ONLY "O" RING AND PROFILE GASKETS ARE ACCEPTABLE.

LIFT HOLES IN MANHOLES SHALL BE SEALED WITH HYDRAULIC CEMENT.

1' PRECAST MANHOLE SECTION SHALL BE SET WHEN MANHOLE TOP IS POURED.

ALL OTHER CHARACTERISTICS ARE SIMILAR TO STANDARD MANHOLES.

ALL CONCRETE SHALL BE CLASS "C".

PRECAST CONCRETE BARRELS SHALL BE IN ACCORDANCE WITH ITEM 706.13 OF THE SPECIFICATIONS.

STEPS CONSTRUCTED OF RUBBER COATED CAST IRON, STAINLESS STEEL, OR FIBER REINFORCED PLASTIC SHALL BE PROVIDED ON ALL MANHOLES.

A MIN. 12" WIDTH EXTERIOR SEALANT WRAP, SUCH AS "WRAPIDSEAL" OR APPROVED EQUAL, SHALL BE PROVIDED AROUND JOINTS AND CASTING IN HIGH WATER TABLES, WHEN SPECIFIED ON PLANS.

USE THIS MANHOLE WHEN NOT LOCATED WITHIN PAVED AREAS.

THE METROPOLITAN SEWER DISTRICT OF

GREATER CINCINNATI

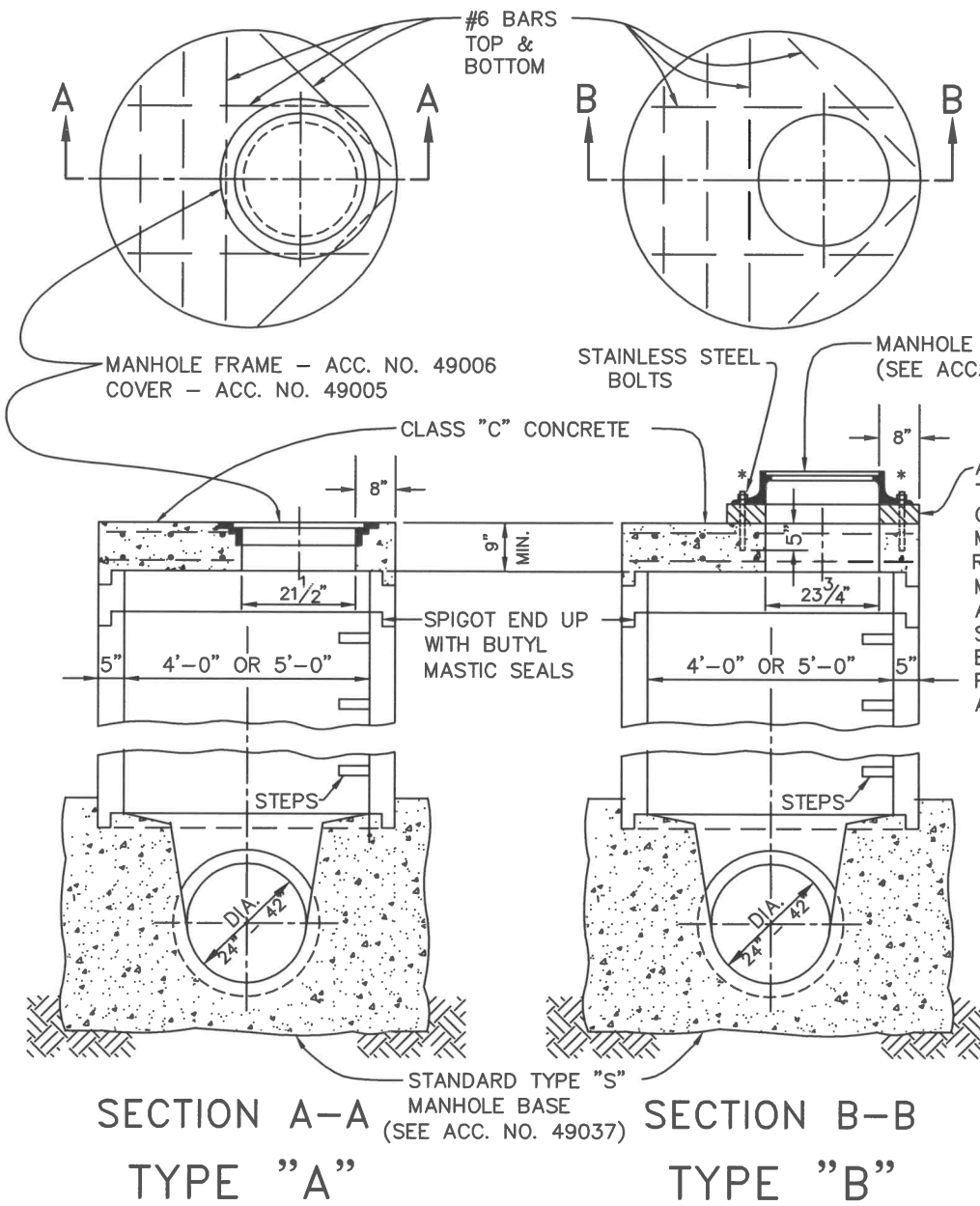
MODIFIED TYPE "S" MANHOLES (CONDUITS 24" - 42" DIA)

NO SCALE

DATE: JAN. 2018

APPROVED:

Ryan Webb
SEWERS CHIEF ENGINEER



SECTION A-A
TYPE "A"
STANDARD TYPE "S" MANHOLE BASE (SEE ACC. NO. 49037)

SECTION B-B
TYPE "B"